



**XILO 2**  
height 1744 mm, length 606 mm. Matt Brown Rust finish (cod. 9U).



**Technical features:**

- steel towel warmer radiator
- horizontal elements featuring rectangular tubes 50x10 mm diameter
- side manifolds with a 30 mm round section
- manifold threading 1/2" Gas right
- maximum working pressure 4 bar
- maximum working temperature 95°C

**Price included:**

- 2 pair of CHELA wall brackets
- 1/2" air vent

**Special options and surcharges:**

Radiators can be supplied with no. 1 1/2" coupling welded laterally for the connection to a single-pipe system and no. 2 1/2" couplings welded laterally to a manifold (Cod. B10).

Surcharge for two 1/2" couplings welded to a lateral manifold and an internal diaphragm (**Cod. B10**)

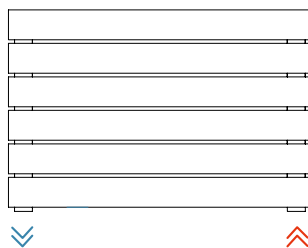
**CAUTION:** when this latter special working is present, correct operation is possible only when the lower outlet coupling is in axial alignment with the lowest pipe. Whenever this coupling is higher, all the pipes below will remain cold because they are not involved in the flow of water.

Prearrangement for monotube valve (**Cod. B14, B15**)

Finishes available	Surcharge
Standard White	
Classic finished	
Special finished	
Other RAL colors	

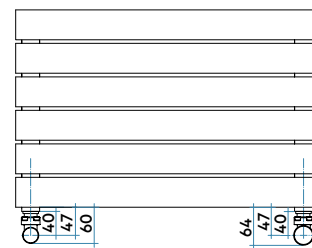
Finishing codes see page 596.

**Connections**

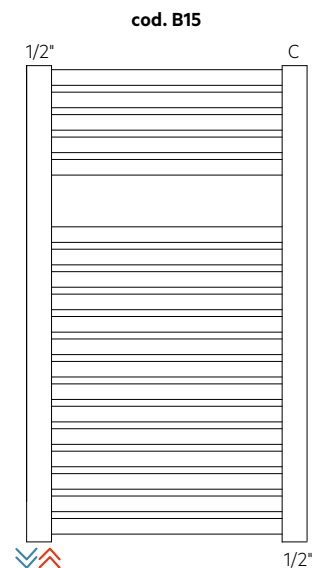
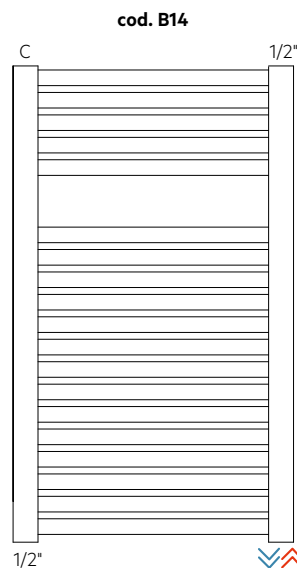
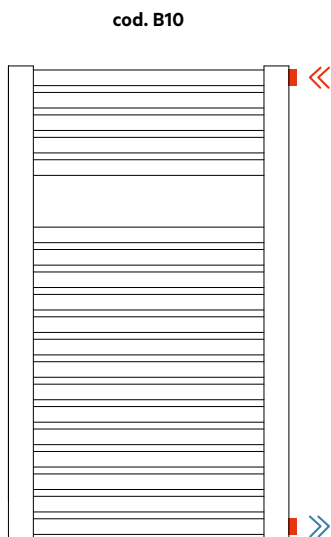


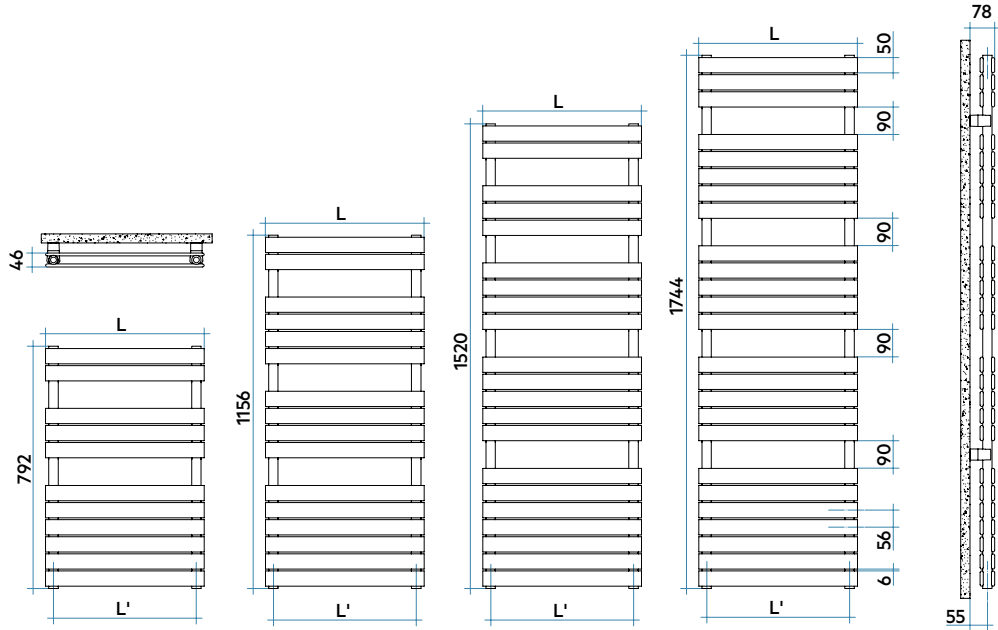
Laterals

**Connection dimensions with IRSAP valves**



For other types of connections see pag. 414





Model	Code	Depth	Height	Width	Conn.		Thermal Power						
					centre	Weight	Cap.	Δt=50°C	Δt=40°C	Δt=30°C	Δt=20°C	Exp.	
		mm	mm	mm	mm	Kg	lt	Btu/h	Watt	Watt	Watt (*)	Watt	n.
792 22 rails 2 espaces	<b>X2P045 B 01 IR 01 NNN</b>	46	792	456	406	11,4	4,4	1819	<b>533</b>	409	<b>290</b>	179	1,192
	<b>X2P050 B 01 IR 01 NNN</b>	46	792	506	456	12,5	4,8	1986	<b>582</b>	446	<b>317</b>	196	1,189
	<b>X2P055 B 01 IR 01 NNN</b>	46	792	556	506	13,6	5,2	2153	<b>631</b>	484	<b>344</b>	213	1,186
	<b>X2P060 B 01 IR 01 NNN</b>	46	792	606	556	14,7	5,6	2320	<b>680</b>	522	<b>371</b>	230	1,184
	<b>X2P075 B 01 IR 01 NNN</b>	46	792	756	706	18,0	6,8	2821	<b>827</b>	636	<b>454</b>	282	1,175
1156 32 rails 3 espaces	<b>X2M045 B 01 IR 01 NNN</b>	46	1156	456	406	16,6	6,5	2474	<b>725</b>	555	<b>393</b>	242	1,198
	<b>X2M050 B 01 IR 01 NNN</b>	46	1156	506	456	18,2	7,0	2709	<b>794</b>	608	<b>431</b>	266	1,195
	<b>X2M055 B 01 IR 01 NNN</b>	46	1156	556	506	19,8	7,6	2944	<b>863</b>	661	<b>470</b>	290	1,191
	<b>X2M060 B 01 IR 01 NNN</b>	46	1156	606	556	21,4	8,2	3179	<b>932</b>	715	<b>508</b>	314	1,187
	<b>X2M075 B 01 IR 01 NNN</b>	46	1156	756	706	26,2	9,8	3884	<b>1138</b>	875	<b>624</b>	387	1,177
1520 42 rails 4 espaces	<b>X2L045 B 01 IR 01 NNN</b>	46	1520	456	406	21,8	8,5	3040	<b>891</b>	673	<b>468</b>	281	1,259
	<b>X2L050 B 01 IR 01 NNN</b>	46	1520	506	456	23,9	9,2	3329	<b>976</b>	739	<b>516</b>	311	1,247
	<b>X2L055 B 01 IR 01 NNN</b>	46	1520	556	506	26,0	10,0	3619	<b>1061</b>	805	<b>565</b>	342	1,234
	<b>X2L060 B 01 IR 01 NNN</b>	46	1520	606	556	28,1	10,7	3909	<b>1146</b>	872	<b>614</b>	374	1,222
	<b>X2L075 B 01 IR 01 NNN</b>	46	1520	756	706	34,4	12,9	4778	<b>1400</b>	1075	<b>765</b>	473	1,184
1744 50 rails 4 espaces	<b>X2G045 B 01 IR 01 NNN</b>	46	1744	456	406	25,8	10,0	3383	<b>992</b>	750	<b>524</b>	315	1,250
	<b>X2G050 B 01 IR 01 NNN</b>	46	1744	506	456	28,3	10,9	3734	<b>1094</b>	830	<b>581</b>	351	1,240
	<b>X2G055 B 01 IR 01 NNN</b>	46	1744	556	506	30,8	11,8	4085	<b>1197</b>	910	<b>638</b>	388	1,231
	<b>X2G060 B 01 IR 01 NNN</b>	46	1744	606	556	33,3	12,7	4436	<b>1300</b>	990	<b>697</b>	425	1,221
	<b>X2G075 B 01 IR 01 NNN</b>	46	1744	756	706	40,8	15,3	5488	<b>1608</b>	1233	<b>875</b>	539	1,193

Mix. Funct.	Code
400	<b>ANRES400WDI</b>
400	<b>ANRES400WDI</b>
400	<b>ANRES400WDI</b>
700	<b>ANRES700WDI</b>
700	<b>ANRES700WDI</b>
700	<b>ANRES700WDI</b>
700	<b>ANRES700WDI</b>
700	<b>ANRES700WDI</b>
1000	<b>ANRES1000WDI</b>
1000	<b>ANRES1000WDI</b>
1000	<b>ANRES1000WDI</b>
1000	<b>ANRES1000WDI</b>
1000	<b>ANRES1000WDI</b>
1000	<b>ANRES1000WDI</b>
1000	<b>ANRES1000WDI</b>
1000	<b>ANRES1000WDI</b>
1000	<b>ANRES1000WDI</b>
1000	<b>ANRES1000WDI</b>
1000	<b>ANRES1000WDI</b>

BATHROOMS RADIATORS

(\*) Thanks to the high performance of Irsap XILO 2 radiators, the ideal Δt for low temperature projects is Δt at 30°C. For Δt different from 50°C use the formula:  $Q=Q_n (\Delta t / 50)^n$

To order a radiator in the mixed version put the code of the Standard version + the code of the corresponding electric heater  
 Example: Mod. 1156 x 556: **X2M055 B 01 IR 01 NNN** (€ 488,47) + **ANRES700WDI** (€ 183,57) = Tot. € 632,04

**Key Codes**

Standard White colour code - for different colour codes see the colors page

Width

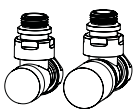
Height

Packing code

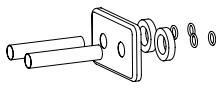
Standard hydraulic code connection

**X2 P 04 5 B 01 IR 01 NNN**

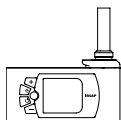
### Decorative & Technical Accessories



Kit Valves and Lockshield valve  
Pag. 562



Pipe cover kit  
Pag. 566



Electronic Control  
Pag. 574

