



VENUS CHROME-PLATED

height 1720 mm, length 595 mm. Chrome-plated finish (cod. 50).



Technical features:

- steel towel warmer radiator
- horizontal elements featuring round tubes with a 23 mm diameter
- side manifolds with a 40x30 mm semioval section
- manifold threading and central connections (50 mm) 1/2" Gas right
- maximum working pressure 8 bar
- maximum working temperature 95°C

Price included:

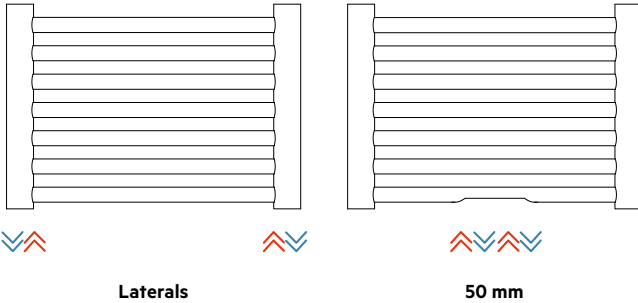
- 4 chrome-plated infratube for wall fixing
- 1/2" chrome-plated air vent

Finishes available

Surcharge

Chrome-plated

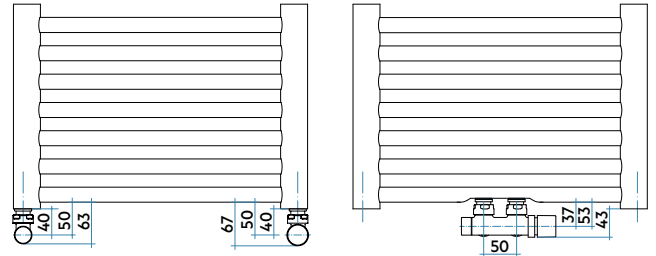
Connections



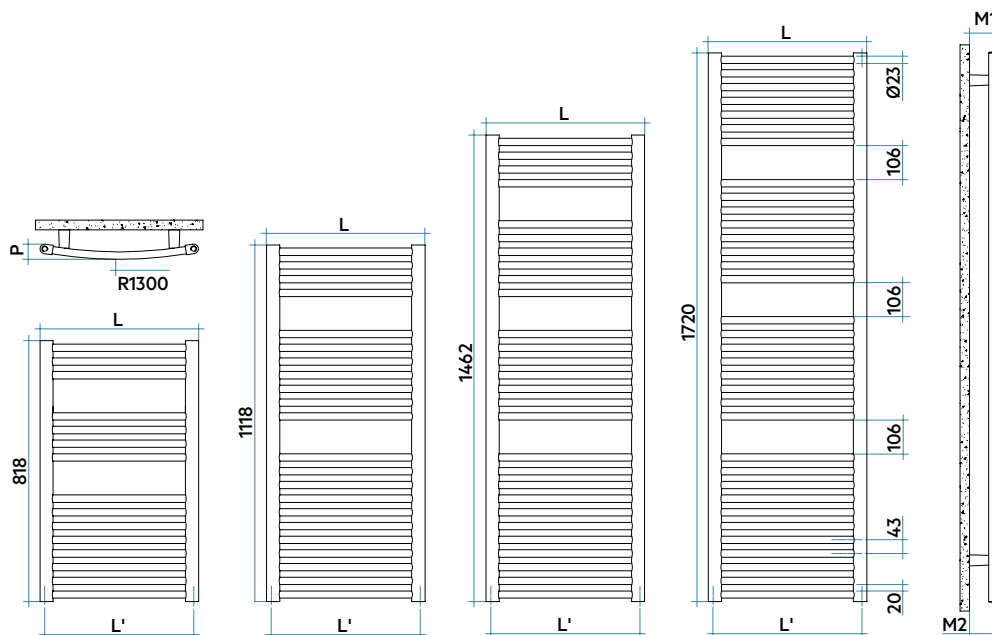
Laterals

50 mm

Connection dimensions with IRSAP valves



For other types of connections see pag. 414



L mm	P mm	M1 mm	M2 mm
428	42	91±106	65±80
497	48	92±107	60±75
595	57	97±112	54±69
740	76	102±117	42±54



Model	Code	Conn.			Thermal Power								
		Depth	Height	Width centre	Weight	Cap.	Δt=50°C	Δt=40°C	Δt=30°C	Δt=20°C	Exp.		
		mm	mm	mm	mm	Kg	lt	Btu/h	Watt	Watt (*)	Watt	n.	
818 15 rails 2 espaces	MIS045 B 50 IR 01 NNN	43	818	448	418	4,7	3,5	746	219	165	114	68	1,269
	MIS050 B 50 IR 01 NNN	48	818	497	467	5,0	3,8	815	239	180	125	75	1,266
	MIS060 B 50 IR 01 NNN	57	818	595	565	5,8	4,3	951	279	210	147	88	1,258
	MIS075 B 50 IR 01 NNN	76	818	740	710	8,9	4,8	1155	338	256	179	108	1,247
1118 22 rails 2 espaces	MIM045 B 50 IR 01 NNN	43	1118	448	418	6,6	5,0	1077	316	238	166	100	1,259
	MIM050 B 50 IR 01 NNN	48	1118	497	467	7,2	5,4	1182	346	262	182	110	1,257
	MIM060 B 50 IR 01 NNN	57	1118	595	565	8,2	6,1	1392	408	308	215	129	1,253
	MIM075 B 50 IR 01 NNN	76	1118	740	710	12,8	6,9	1706	500	379	265	160	1,246
1462 28 rails 3 espaces	MIL045 B 50 IR 01 NNN	43	1462	448	418	8,5	6,4	1373	402	305	213	129	1,245
	MIL050 B 50 IR 01 NNN	48	1462	497	467	9,2	6,9	1508	442	335	234	141	1,247
	MIL060 B 50 IR 01 NNN	57	1462	595	565	10,5	7,9	1780	522	395	276	166	1,249
	MIL075 B 50 IR 01 NNN	76	1462	740	710	16,3	8,8	2187	641	485	338	203	1,254
1720 34 rails 3 espaces	MIG045 B 50 IR 01 NNN	43	1720	448	418	10,2	7,7	1670	489	370	258	156	1,251
	MIG050 B 50 IR 01 NNN	48	1720	497	467	11,0	8,3	1837	538	407	284	171	1,250
	MIG060 B 50 IR 01 NNN	57	1720	595	565	12,6	9,5	2171	636	482	336	203	1,249
	MIG075 B 50 IR 01 NNN	76	1720	740	710	19,7	10,6	2673	783	593	414	250	1,246

Mix. Funct.	Code
0	-
0	-
300	ANRES300WDI50
300	ANRES300WDI50
300	ANRES300WDI50
400	ANRES400WDI50
400	ANRES400WDI50
400	ANRES400WDI50
400	ANRES400WDI50
400	ANRES400WDI50
400	ANRES400WDI50
700	ANRES700WDI50
400	ANRES400WDI50
400	ANRES400WDI50
700	ANRES700WDI50
700	ANRES700WDI50

Electric heater for Dual Power

CHROME-PLATED RADIATORS

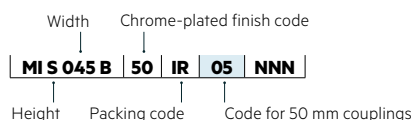
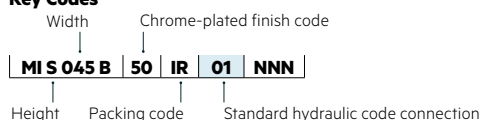
(*) Thanks to the high performance of Irsap VENUS CHROME-PLATED radiators, the ideal Δt for low temperature projects is Δt at 30°C.

For Δt different from 50°C use the formula: Q=Qn (Δt / 50)ⁿ

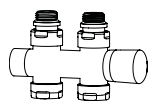
To order a radiator in the mixed version put the code of the Standard version + the code of the corresponding electric heater

Example: Mod. 1720 x 497: **MIG050 B 50 IR 01 NNN** (€ 499,02) + **ANRES400WDI50** (€ 175,13) = Tot. € 674,15

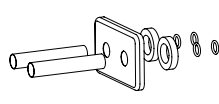
Key Codes



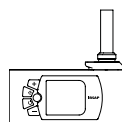
Decorative & Technical Accessories



Kit Valves and Lockshield valve
Pag. 562



Pipe cover kit
Pag. 566



Electronic Control
Pag. 574

