



**FLAUTO CHROME-PLATED**

height 1218 mm, length 506 mm. Chrome-plated finish (cod. 50).



**Technical features:**

- steel towel warmer radiator
- horizontal elements featuring round tubes 18 mm diameter
- side manifolds with a 30 mm round section
- manifold threading 1/2" Gas right
- maximum working pressure 8 bar
- maximum working temperature 95°C

**Price included:**

- pair of chela wall brackets
- wall spacer
- 1/2" chrome-plated air vent

**Special options and surcharges:**

Radiators can be supplied with no. 1 1/2" coupling welded laterally for the connection to a single-pipe system and no. 2 1/2" couplings welded laterally to a manifold (Cod. B10).

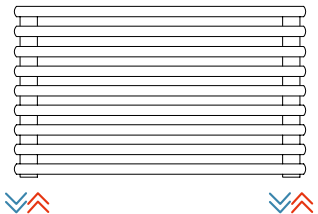
Surcharge for two 1/2" couplings welded to a lateral manifold and an internal diaphragm (**Cod. B10**)

**CAUTION:** when this latter special working is present, correct operation is possible only when the lower outlet coupling is in axial alignment with the lowest pipe. Whenever this coupling is higher, all the pipes below will remain cold because they are not involved in the flow of water.

Prearrangement for monotube valve (**Cod. B14, B15**)

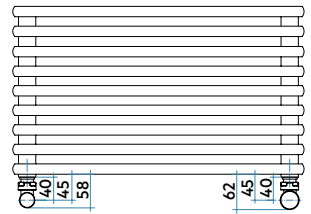
Finishes available	Surcharge
Chrome-plated	

**Connections**

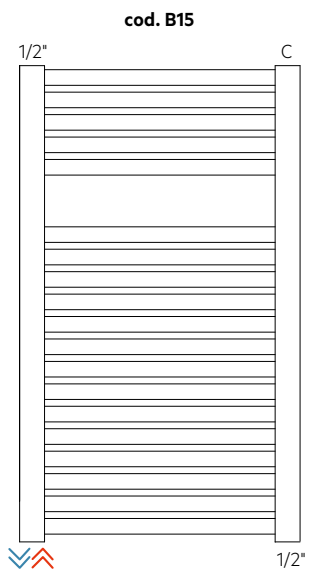
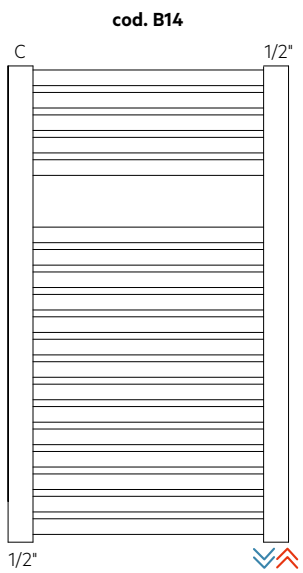
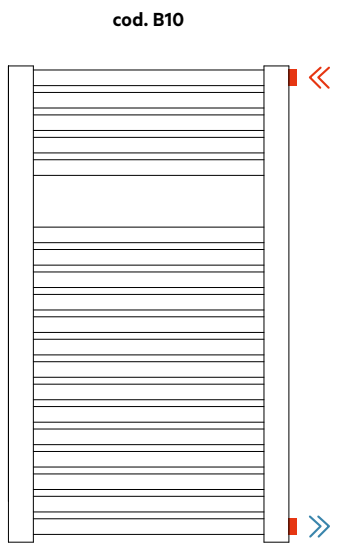


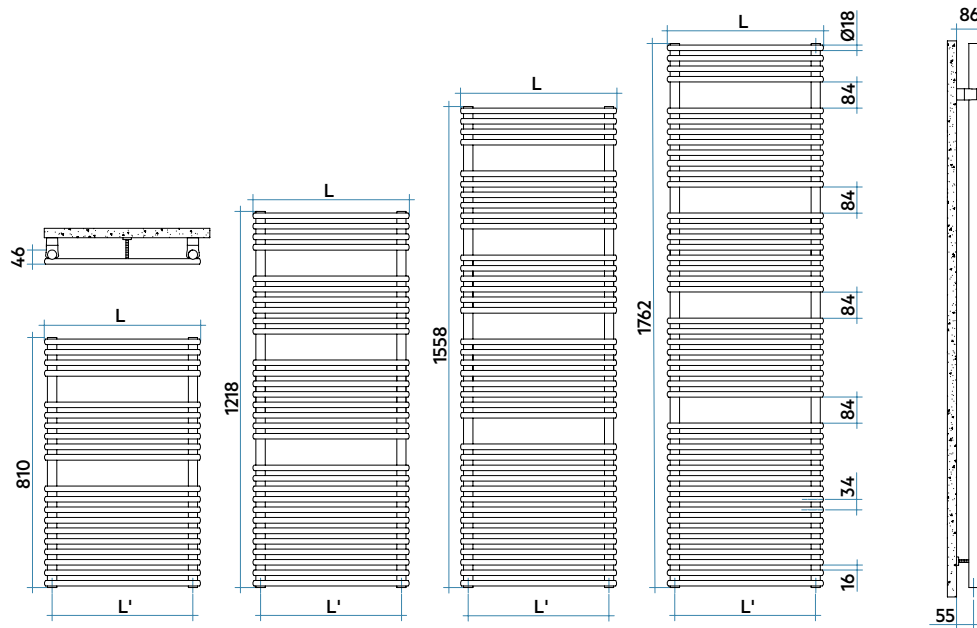
Laterals

**Connection dimensions with IRSAP valves**



For other types of connections see pag. 414





Model	Code	Depth	Height	Width	Conn.		Thermal Power					Exp.	Mix. Funct.	
					centre	Weight	Cap.	Δt=50°C	Δt=40°C	Δt=30°C	Δt=20°C			Watt
810 20 rails 2 espaces	FTP045 B 50 IR 01 NNN	46	810	456	406	5,6	2,8	926	<b>271</b>	209	<b>149</b>	92	1,180	300 ANRES300WDI50
	FTP050 B 50 IR 01 NNN	46	810	506	456	6,1	3,0	1023	<b>300</b>	230	<b>164</b>	102	1,178	300 ANRES300WDI50
	FTP055 B 50 IR 01 NNN	46	810	556	506	6,5	3,1	1120	<b>328</b>	252	<b>180</b>	112	1,177	300 ANRES300WDI50
	FTP060 B 50 IR 01 NNN	46	810	606	556	7,0	3,3	1216	<b>356</b>	274	<b>196</b>	121	1,176	300 ANRES300WDI50
	FTP075 B 50 IR 01 NNN	46	810	756	706	8,4	3,9	1506	<b>442</b>	340	<b>243</b>	151	1,172	400 ANRES400WDI50
1218 30 rails 3 espaces	FTM045 B 50 IR 01 NNN	46	1218	456	406	8,4	4,1	1359	<b>398</b>	303	<b>214</b>	130	1,220	400 ANRES400WDI50
	FTM050 B 50 IR 01 NNN	46	1218	506	456	9,1	4,4	1480	<b>434</b>	331	<b>233</b>	142	1,218	400 ANRES400WDI50
	FTM055 B 50 IR 01 NNN	46	1218	556	506	9,8	4,7	1601	<b>469</b>	358	<b>252</b>	154	1,217	400 ANRES400WDI50
	FTM060 B 50 IR 01 NNN	46	1218	606	556	10,5	5,0	1721	<b>504</b>	385	<b>271</b>	166	1,215	400 ANRES400WDI50
	FTM075 B 50 IR 01 NNN	46	1218	756	706	12,5	5,9	2083	<b>610</b>	466	<b>329</b>	202	1,209	400 ANRES400WDI50
1558 38 rails 4 espaces	FTL045 B 50 IR 01 NNN	46	1558	456	406	10,6	5,2	1761	<b>516</b>	391	<b>274</b>	165	1,243	400 ANRES400WDI50
	FTL050 B 50 IR 01 NNN	46	1558	506	456	11,5	5,6	1927	<b>565</b>	429	<b>301</b>	183	1,232	400 ANRES400WDI50
	FTL055 B 50 IR 01 NNN	46	1558	556	506	12,4	6,0	2092	<b>613</b>	467	<b>328</b>	200	1,222	400 ANRES400WDI50
	FTL060 B 50 IR 01 NNN	46	1558	606	556	13,2	6,4	2258	<b>662</b>	505	<b>356</b>	218	1,212	700 ANRES700WDI50
1762 44 rails 4 espaces	FTL075 B 50 IR 01 NNN	46	1558	756	706	15,9	7,5	2754	<b>807</b>	620	<b>442</b>	274	1,180	700 ANRES700WDI50
	FTG045 B 50 IR 01 NNN	46	1762	456	406	12,2	6,0	1979	<b>580</b>	440	<b>307</b>	186	1,243	400 ANRES400WDI50
	FTG050 B 50 IR 01 NNN	46	1762	506	456	13,2	6,5	2162	<b>634</b>	481	<b>337</b>	204	1,237	700 ANRES700WDI50
	FTG055 B 50 IR 01 NNN	46	1762	556	506	14,3	6,9	2345	<b>687</b>	522	<b>367</b>	223	1,230	700 ANRES700WDI50
	FTG060 B 50 IR 01 NNN	46	1762	606	556	15,3	7,3	2528	<b>741</b>	564	<b>397</b>	242	1,223	700 ANRES700WDI50
FTG075 B 50 IR 01 NNN	46	1762	756	706	18,3	8,6	3077	<b>902</b>	689	<b>488</b>	299	1,203	1000 ANRES1000WDI50	

Electric heater for Dual Power

CHROME-PLATED RADIATORS

(\*) Thanks to the high performance of Irsap FLAUTO CHROME-PLATED radiators, the ideal Δt for low temperature projects is Δt at 30°C.

For Δt different from 50°C use the formula:  $Q=Q_n (\Delta t / 50)^n$

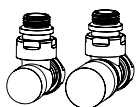
To order a radiator in the mixed version put the code of the Standard version + the code of the corresponding electric heater

Example: Mod. 1762 x 456: **FTG045 B 50 IR 01 NNN** (€ 989,59) + **ANRES400WDI50** (€ 175,13) = Tot. € 1.164,72

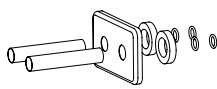
### Key Codes

Width	Chrome-plated finish code
<b>FT P 045 B</b>	<b>50 IR 01 NNN</b>
Height	Packing code
	Standard hydraulic code connection

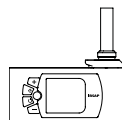
### Decorative & Technical Accessories



Kit Valves and Lockshield valve  
Pag. 562



Pipe cover kit  
Pag. 566



Electronic Control  
Pag. 574

